

HILLIER & WILSON



Jago Court, Newbury, RG14 7EZ

Jago Court, Newbury

An immaculately presented three bedroom family home located in a popular residential area on the south side of Newbury. The property benefits from numerous modern features, gas central heating, uPVC double glazing and driveway parking. The ground floor accommodation comprises entrance hall, downstairs cloakroom, modern kitchen with fitted appliances and a breakfast bar area, sitting/dining room with ambient lighting and French doors out onto the garden. Upstairs, there is a principal bedroom with a built in wardrobe and modern en-suite shower room, two further bedrooms and a stunning Ripples hydrotherapy bathroom with spa bath and ambient lighting. Externally, there is a low maintenance, landscaped rear garden with a decked area and also a patio seating area. To the front, you have off road parking via block paved driveway as well as an allocated space around the corner. Jago Court has a small kids playground within the development and is very conveniently located for the town centre, railway station and retail park which are all within a short drive.





- THREE BEDROOM FAMILY HOME
- POPULAR DEVELOPMENT IN SOUTH NEWBURY
 - BEAUTIFULLY PRESENTED THROUGHOUT
 - RIPPLES BATHROOM WITH HYDROTHERAPY SPA BATH
- KIDS PLAYGROUND WITHIN THE DEVELOPMENT
- SHORT DISTANCE TO NEWBURY TOWN CENTRE

Services:

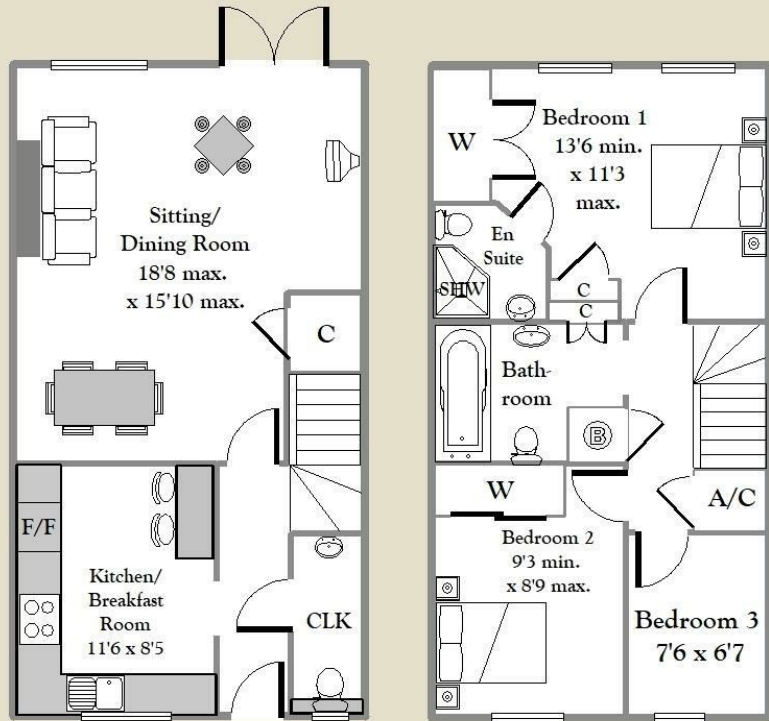
Mains services are connected
(Service charge applies)

EPC: Rating C

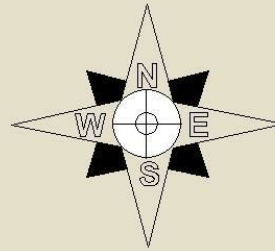
Full results can be sent on request

Council Tax: Band D

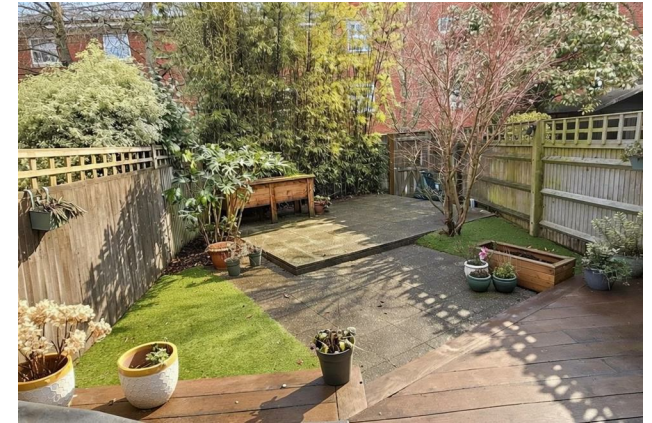




Jago Court, South Newbury



APPROX GROSS INTERNAL
FLOOR AREA 996 sq. ft.
For identification only - Not to scale



Hillier & Wilson wish to inform prospective purchasers that we have listed the details of this property as a general guide and in good faith. We have not carried out a detailed survey nor tested the services, appliances or specific fittings. Any reference to alterations does not mean that any planning permission, building regulation or other consent has been obtained. Investigations must be made by buyer's solicitor. Room sizes should not be relied upon for carpets and furnishings. Fixtures & fittings are excluded from the property unless stated in the sales particulars.